



### HIGHLIGHTS

- Connected to UMSL Campus and Express Scripts Campus
- Just south of I-70 from NorthPark Development with 5.5 million square feet of commercial space including Vatterott College

### CENTRAL LOCATION

- Just minutes to Lambert Airport (2 miles)
- 9 minutes to Earth City (8 miles)
- 10 minutes to Clayton’s Central Business District (7 miles)
- 10 minutes to Westport (8 miles)
- 15 minutes to Downtown Central Business District (10 miles)

**1-70 VISIBILITY**  
**I-70 - 131,452 VPD**  
**North Hanley - 15,950 VPD**

	1 - mile	3 - mile	7 minute drive time
Est. Pop.	8,102	99,526	124,976
Med. Age	30	34.3	33.7
Day Pop	7,528	82,176	115,260

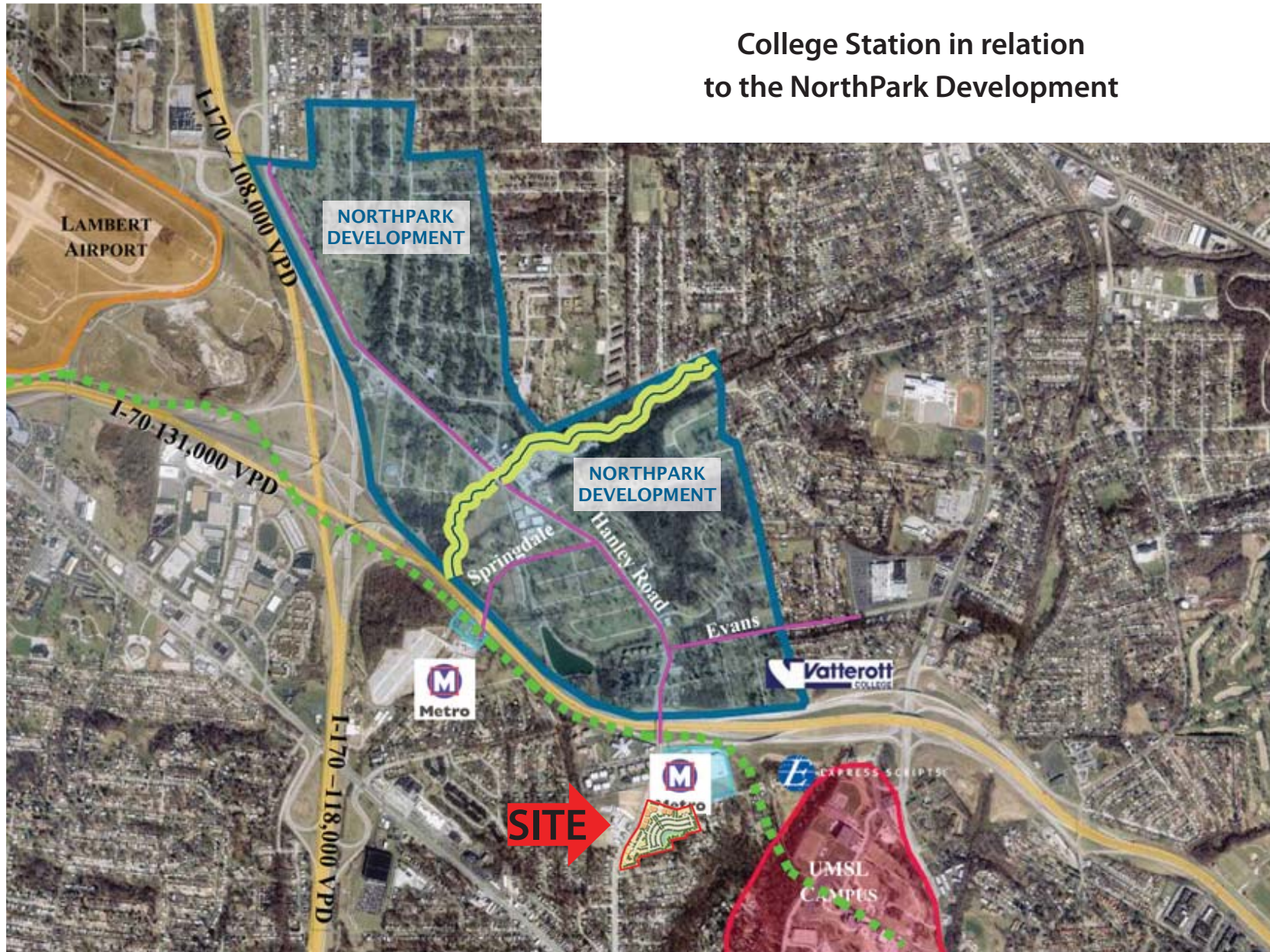
For information contact: Mike Hurley [mikeh@foundationcommercial.com](mailto:mikeh@foundationcommercial.com) or 314.484.1469 (cell)

8301 Maryland Avenue, Suite 301 - St. Louis, MO 63105 • 314.862.4220 • [www.foundationcommercial.com](http://www.foundationcommercial.com)





### College Station in relation to the NorthPark Development



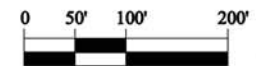
For information contact: Mike Hurley [mikeh@foundationcommercial.com](mailto:mikeh@foundationcommercial.com) or 314.484.1469 (cell)

8301 Maryland Avenue, Suite 301 - St. Louis, MO 63105 • 314.862.4220 • [www.foundationcommercial.com](http://www.foundationcommercial.com)





SITE PLAN



06-04-10



For information contact: Mike Hurley [mikeh@foundationcommercial.com](mailto:mikeh@foundationcommercial.com) 314.484.1469 (cell)

8301 Maryland Avenue, Suite 301 - St. Louis, MO 63105 • 314.862.4220 • [www.foundationcommercial.com](http://www.foundationcommercial.com)

