



**LAND
AVAILABLE**

**SALE / LEASE
WILL SUBDIVIDE**

PROPERTY HIGHLIGHTS

- Conveniently located at the lighted intersection of Page Ave. & Ball Dr.
- Rare retail opportunity with outstanding visibility in the heart of Westport
- 80,675 VPD on Page

	1 - mile	3 - mile	5 - mile
Est. Pop.	4,285	83,895	172,139
Med. HH Income	\$55,159	\$68,665	\$78,392
Med. Age	44.5	40.1	40.7
Day Pop	11,732	71,119	141,434

SURROUNDING AREA

- Westport Plaza
- Edward Jones Campus
- Monsanto
- TALX Headquarters
- Schnucks Headquarters
- World Wide Technologies

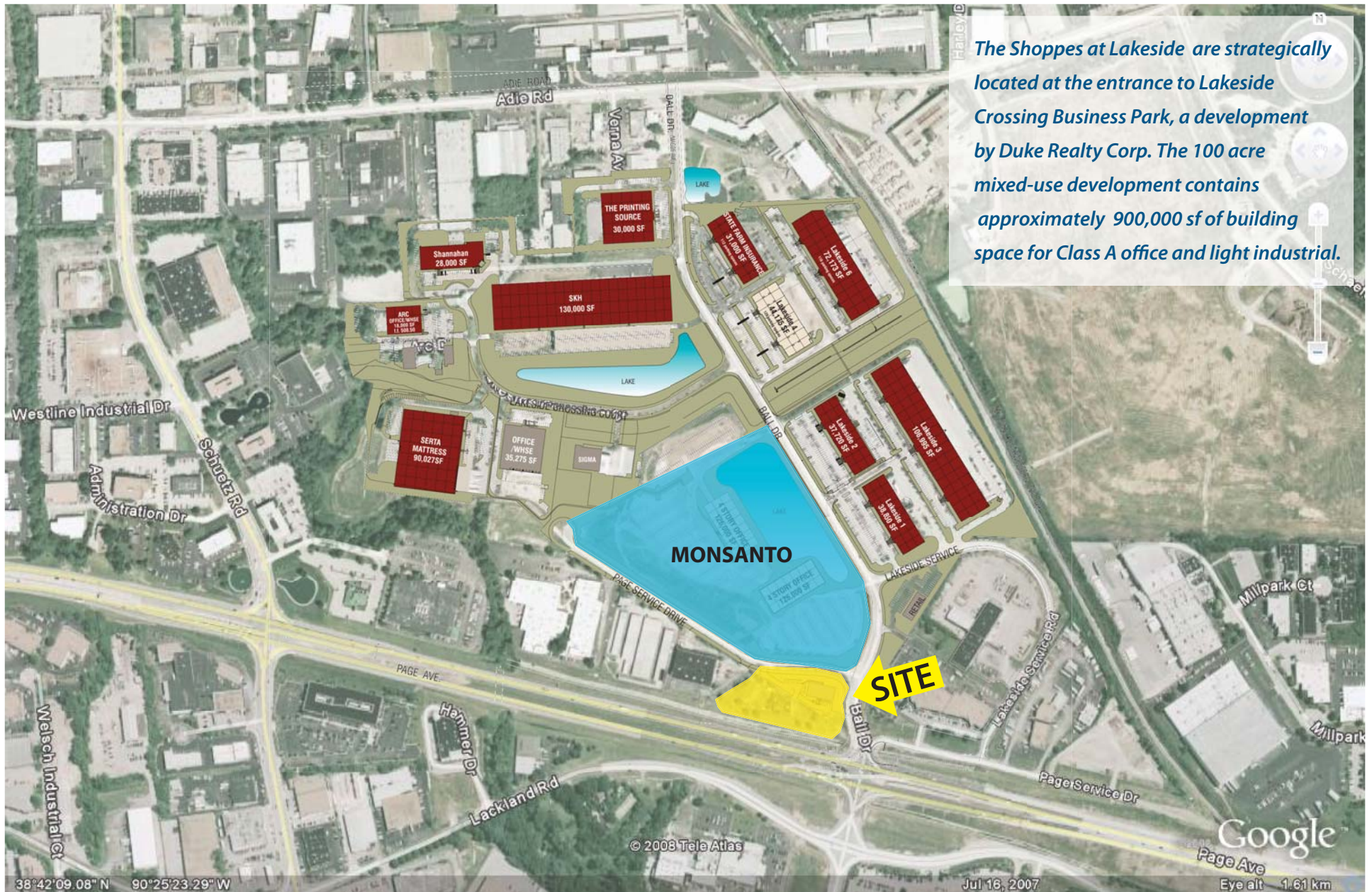
For information contact: Ted Martin tedm@foundationcommercial.com

John Beckman johnb@foundationcommercial.com

Lakeside Crossing

2201 Ball Drive, St. Louis-MO 63146

LAKESIDE CROSSING



The Shoppes at Lakeside are strategically located at the entrance to Lakeside Crossing Business Park, a development by Duke Realty Corp. The 100 acre mixed-use development contains approximately 900,000 sf of building space for Class A office and light industrial.

For information contact: Ted Martin tedm@foundationcommercial.com

John Beckman johnb@foundationcommercial.com

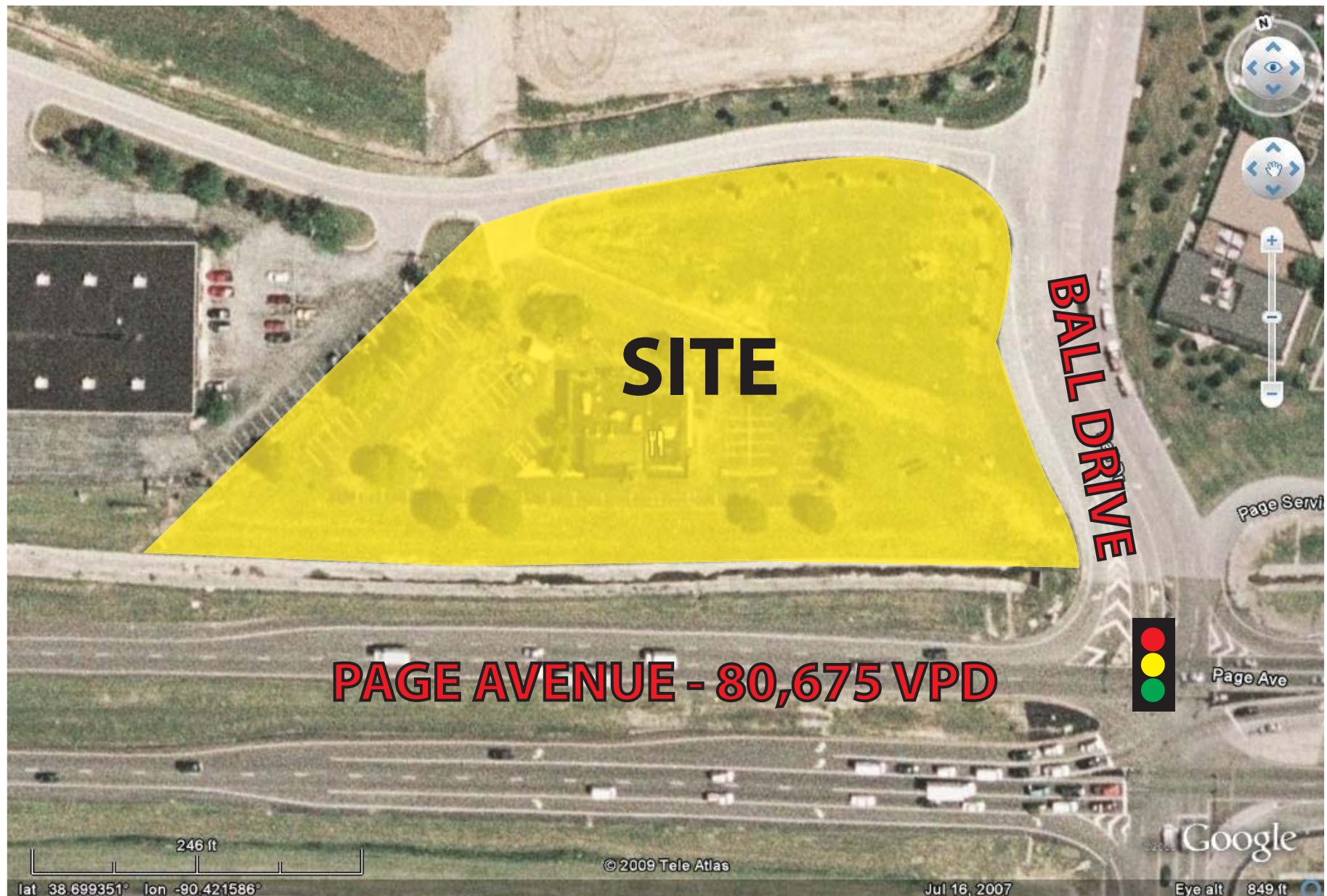
8301 Maryland Avenue, Suite 301 - St. Louis, MO 63105 • 314.862.4220 • www.foundationcommercial.com



Lakeside Crossing

2201 Ball Drive, St. Louis-MO 63146

CLOSE AERIAL



For information contact: Ted Martin tedm@foundationcommercial.com

John Beckman johnb@foundationcommercial.com

8301 Maryland Avenue, Suite 301 - St. Louis, MO 63105 • 314.862.4220 • www.foundationcommercial.com

