

11705 Dorsett Road

Dorsett Rd. and Fee Fee Rd. - Maryland Heights, MO 63043

RETAIL / OFFICE for LEASE

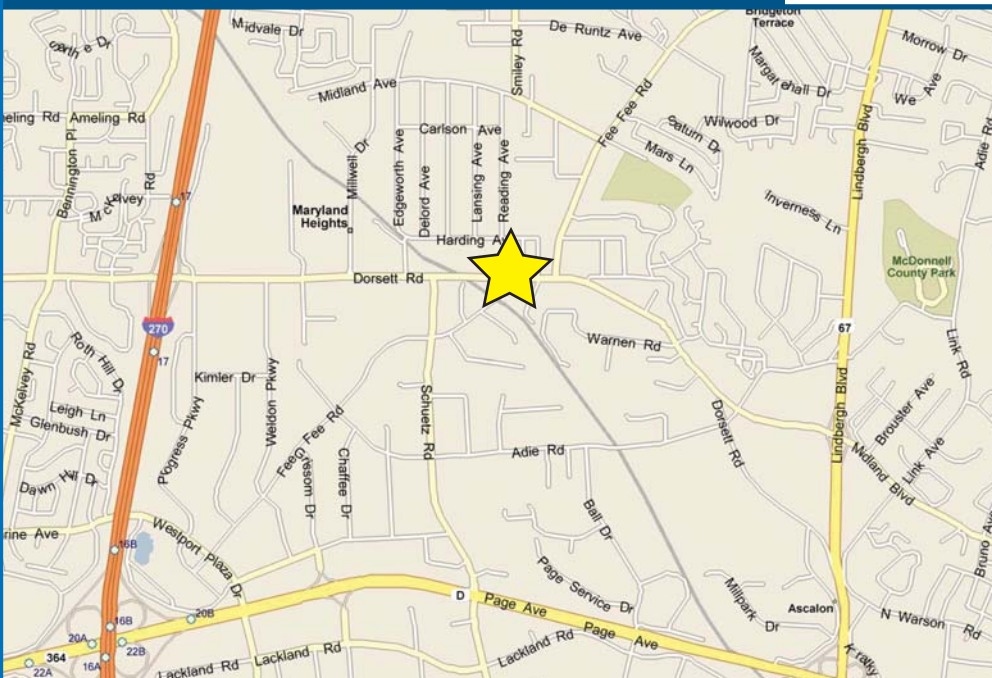
\$14.00 PSF NNN



PROPERTY HIGHLIGHTS

- Brand New Office/Retail Building
- 1 mile east of 270 on Dorsett
- Multiple SF variations available from 1,000 - 25,000

	1 - mile	3 - mile	5 - mile
Est. Pop.	4,413	79,184	151,310
Med. HH Income	\$47,926	\$51,153	\$51,381
Med. Age	35.5	37.7	38.2
Day Pop	11,843	98,200	196,307



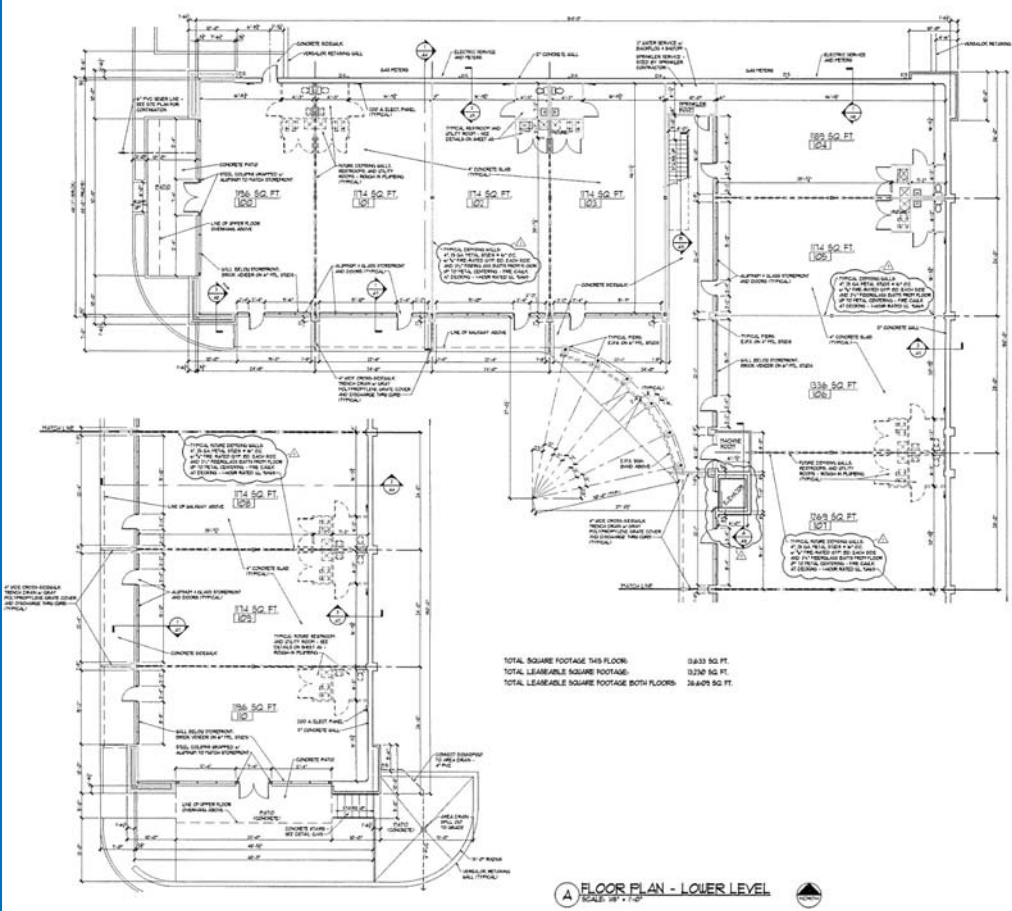
FOR MORE INFO:

Mike Hurley
8301 Maryland Avenue
Suite 301
St. Louis, MO 63105
314-862-4220 (o)
314-484-1469 (c)
mikeh@foundationcommercial.com



11705 Dorsett Road

Dorsett Rd. and Fee Fee Rd. - Maryland Heights, MO 63043



FOR MORE INFO:
 Mike Hurley
 8301 Maryland Avenue
 Suite 301
 St. Louis, MO 63105
 314-862-4220 (o)
 314-484-1469 (c)
 mikeh@foundationcommercial.com



A FLOOR PLAN - LOWER LEVEL
 SCALE: 1/8" = 1'-0"