

# St. Louis Marketplace

Manchester and McCausland, St. Louis-MO

SUMMARY



## PROPERTY HIGHLIGHTS

- 276,603 SF Retail Center
- Anchored by Kmart
- Outparcels Available
- Located at signalized intersections with tree lined streets

**LANDLORD PURSUING  
AGRESSIVE LEASE  
OPPORTUNITIES**

## CO-TENANTS

Dollar General  
Switch  
Charter Communications  
Club Fitness  
Taco Bell

**FOR LEASE \$12 NNN  
OUTLOTS \$12 PSF**

	1 - mile	3 - mile	7 minute drive time
Est. Pop.	19,926	142,194	254,100
Med. HH Income	\$37,403	\$43,134	\$41,296
Med. Age	37.3	37.2	37.4
Day Pop	12,502	137,658	242,104

For information contact: Jared Hancock [jaredh@foundationcommercial.com](mailto:jaredh@foundationcommercial.com)

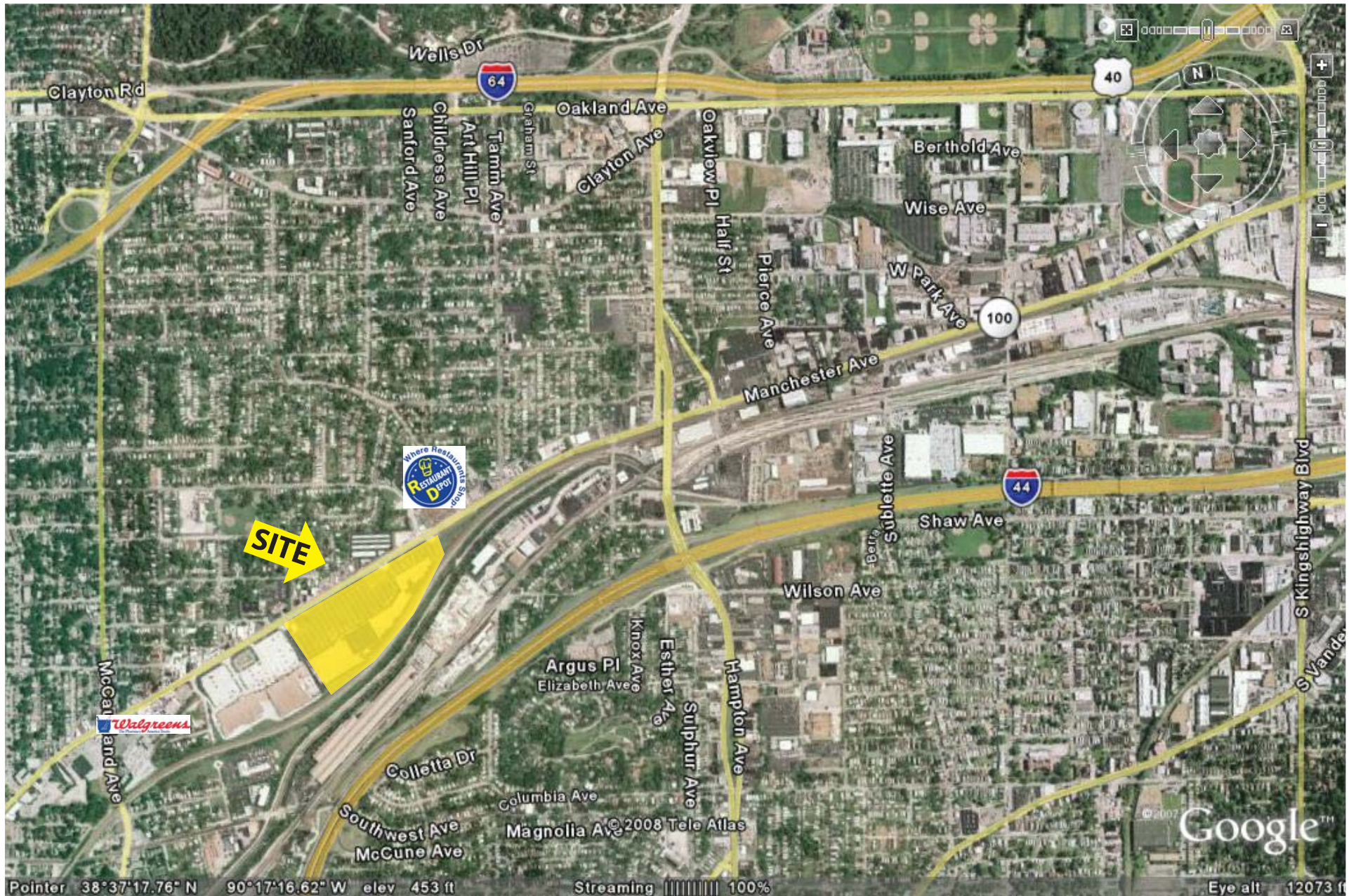
8301 Maryland Avenue, Suite 301 - St. Louis, MO 63105 • 314.862.4220 • [www.foundationcommercial.com](http://www.foundationcommercial.com)



# St. Louis Marketplace

Manchester and McCausland, St. Louis-MO

AERIAL



For information contact: Jared Hancock [jaredh@foundationcommercial.com](mailto:jaredh@foundationcommercial.com)

8301 Maryland Avenue, Suite 301 - St. Louis, MO 63105 • 314.862.4220 • [www.foundationcommercial.com](http://www.foundationcommercial.com)



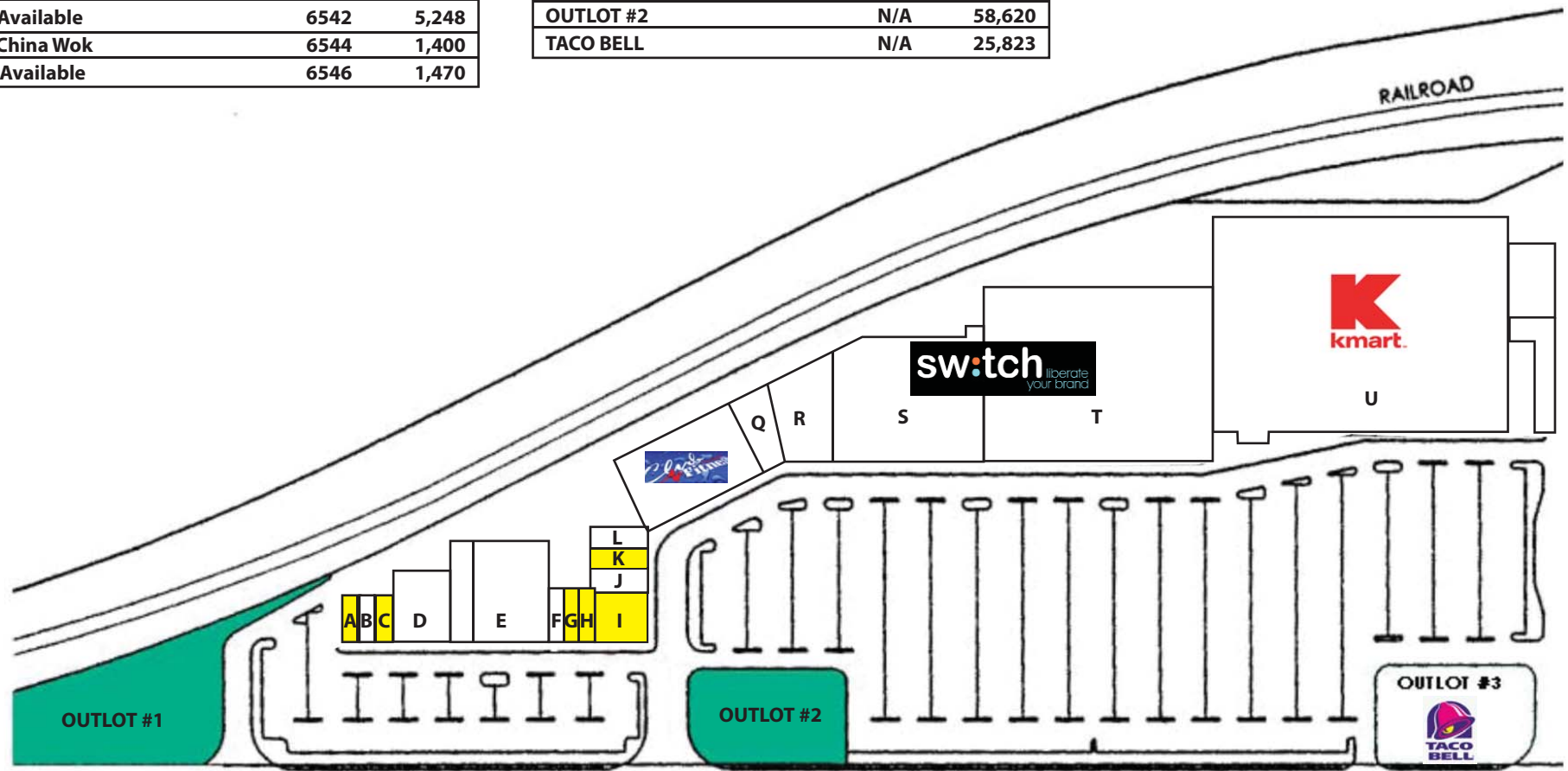
# St. Louis Marketplace

Manchester and McCausland, St. Louis-MO

SITE PLAN

	Address	SF
A Available	6500	1,200
B Southside Temporaries	6504	1,200
C Available	6508	1,200
D Renex Dialysis	6512	6,300
E Charter Communications	6524	16,137
F E-Z Payday and Loans	6528	1,470
G Available	6532	1,470
H Available	6536	1,470
I Available	6542	5,248
J China Wok	6544	1,400
K Available	6546	1,470

	Address	SF
L St. Louis Public Library	6548	1,750
M Club Fitness	6554	16,239
Q Speed Thru Power	6570	4,399
R Dollar General	6574	7,975
S Switch Advertising	6590	30,068
T Switch Advertising	6600	66,420
U K-Mart	6650	113,057
OUTLOT #1	N/A	27,071
OUTLOT #2	N/A	58,620
TACO BELL	N/A	25,823



For information contact: Jared Hancock [jaredh@foundationcommercial.com](mailto:jaredh@foundationcommercial.com)

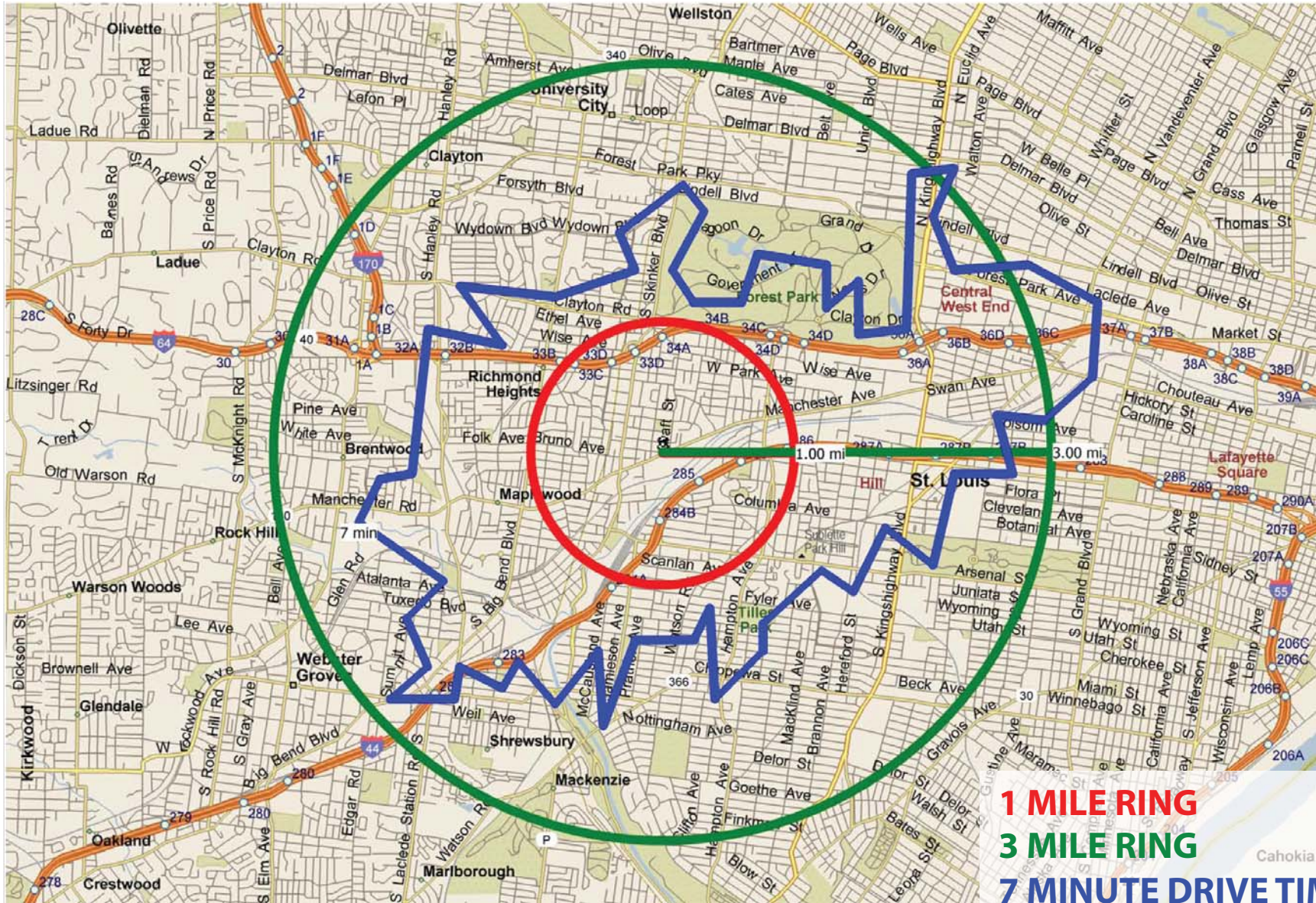
8301 Maryland Avenue, Suite 301 - St. Louis, MO 63105 • 314.862.4220 • [www.foundationcommercial.com](http://www.foundationcommercial.com)



# St. Louis Marketplace

Manchester and McCausland, St. Louis-MO

MAP



**1 MILE RING**  
**3 MILE RING**  
**7 MINUTE DRIVE TIME**

For information contact: Jared Hancock [jaredh@foundationcommercial.com](mailto:jaredh@foundationcommercial.com)

8301 Maryland Avenue, Suite 301 - St. Louis, MO 63105 • 314.862.4220 • [www.foundationcommercial.com](http://www.foundationcommercial.com)

